

recobel[®]
a Halmann Vella brand



BUILDING, CLADDING & LANDSCAPING SOLUTIONS
PRODUCT GUIDE

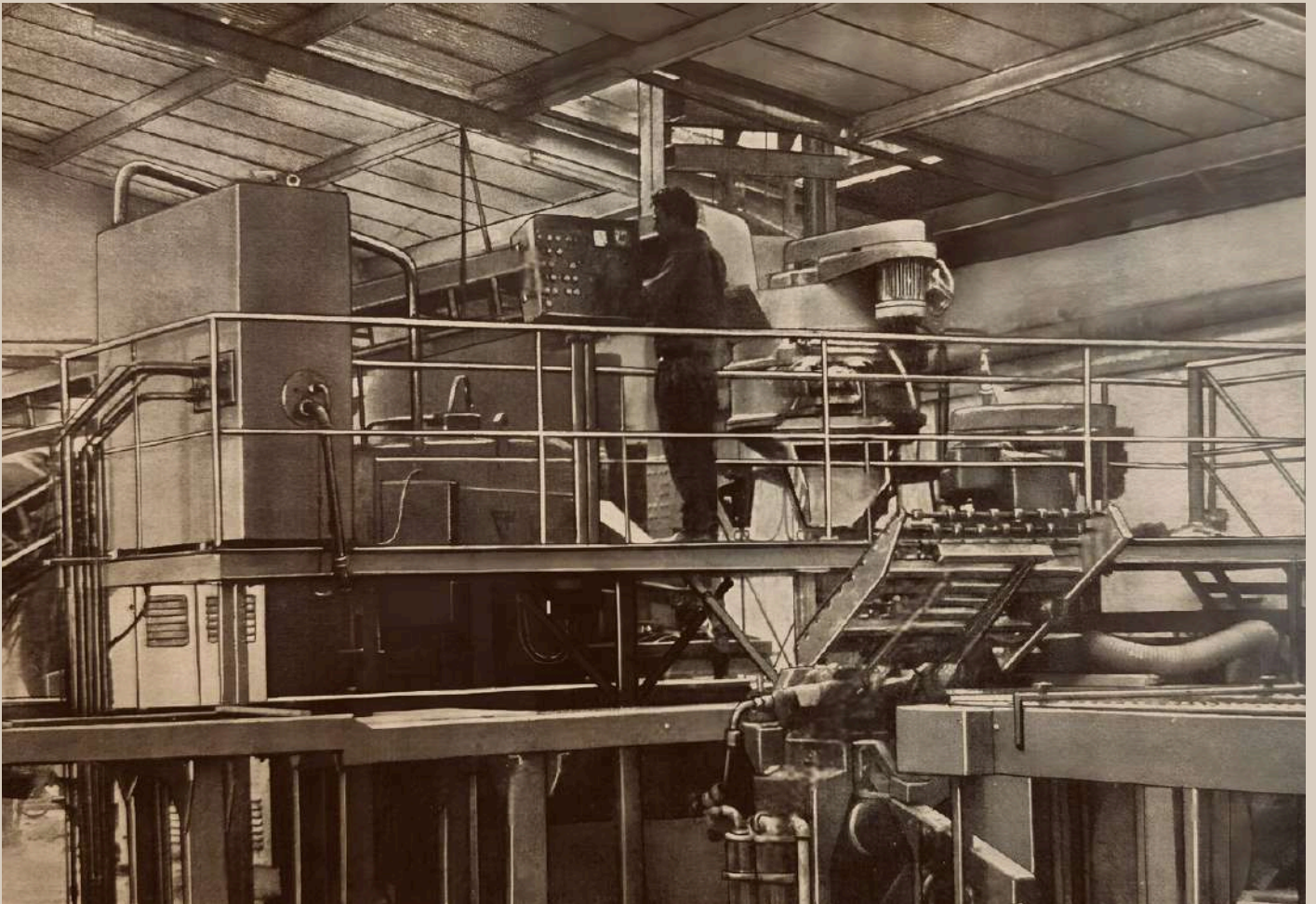
2026

Table of Contents

Page	Chapter
3	The Group's Story
4	Strategic Location
5	Expertise in Terrazzo, Natural Stone
6	The Civil & Finishes Works Contractor
7	A Visionary Brand
8	Our Mission
11	Pressed Building Products Division
13	Environmental Credentials
15	Production Process
18	Our Colours
20	Applications
21	XL Slabs
22	Paving & Cladding
23	Building Solutions
24	Kerbs and Solid Steps
25	Textures
26	Upcoming
28	International Clients
30	Contact Us

The Group's Story

Halmann Vella is a publicly listed company and one of Malta's largest manufacturers and suppliers of premium stone, terrazzo, and architectural solutions. Known for its stability and trustworthy reputation, the company has grown from a small enterprise into one of the leading companies in the industry, blending tradition with advanced technology. With over 70 years of experience, Halmann Vella now operates with over 200 employees and cutting-edge production facilities in Lija and Hal Far. The company's evolution reflects a strong legacy and a commitment to excellence and innovation.



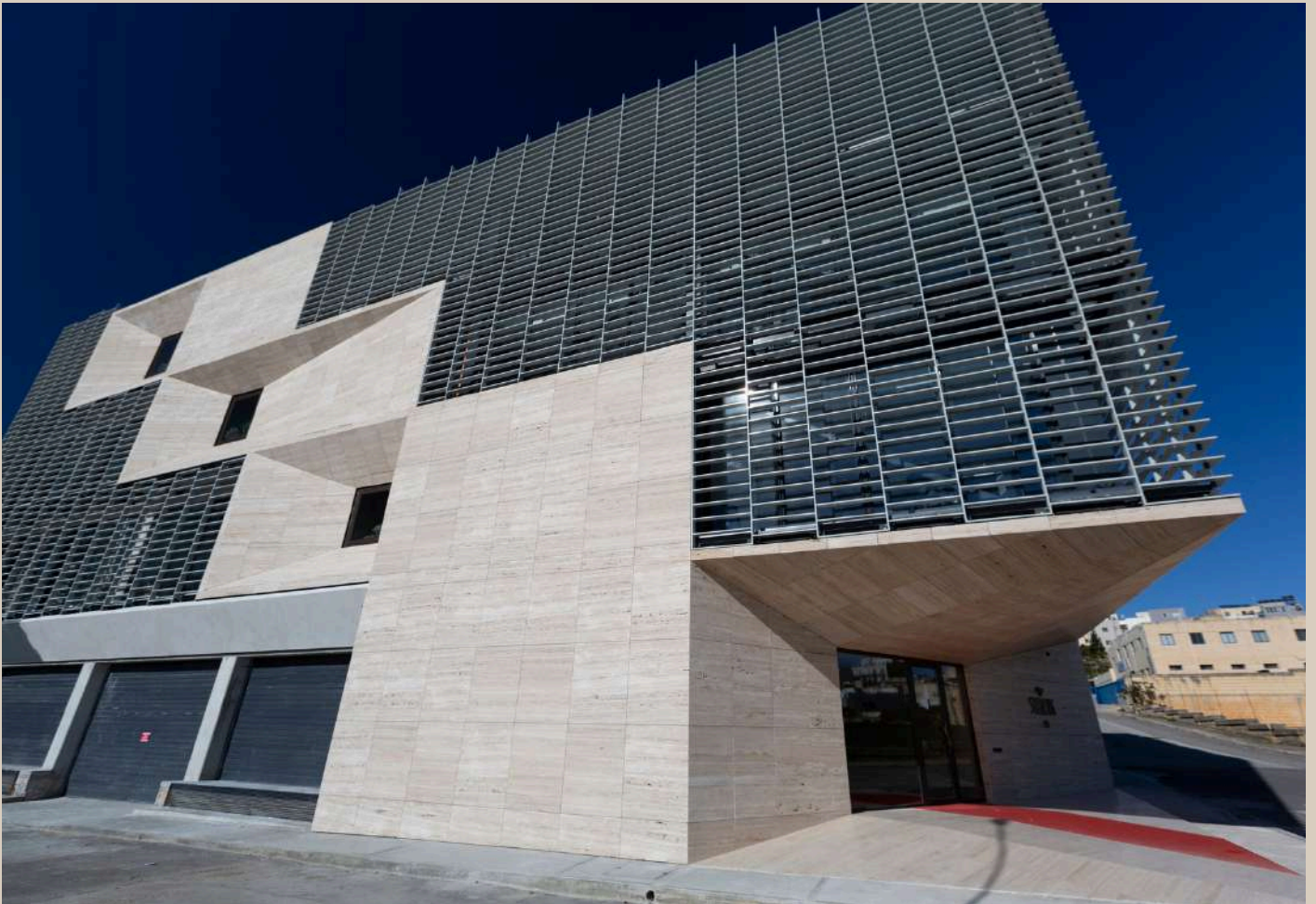
Strategic Location

As a Maltese company strategically positioned in the heart of the Mediterranean, Halmann Vella benefits from its prime location and proximity to the Malta Freeport. This enables ideal integration into global supply chains, connecting Europe and North Africa. The company's location provides efficient export operations, supports the local market, and reinforces its position as a significant stakeholder in both domestic and international commerce.



Expertise in Natural Stone, Terrazzo and Surfacing Solutions

The cement tile was the first element on the production line, skillfully prepared and pressed with mechanical machines that were manned by the local artisans. Today, Halmann Vella is renowned for its expertise in producing high-quality surfacing materials, specialising in terrazzo, natural stone from certified quarries across the globe and architectural solutions. The company's portfolio includes customised creations, such as large-scale facades and intricate design elements like countertops, vanities, and cladding. Halmann Vella's work is distinguished by its collaborations with renowned architects, including the internationally acclaimed Renzo Piano, as well as other established designers, ensuring that each project reflects the highest standards of quality, precision, and sustainability.



The Civil & Finishes Works Contractor

Halmann Vella is a trusted contractor for civil and finishing works alike. The company undertakes complex projects across commercial, residential, and public sectors. From large-scale facades to detailed, bespoke concepts, Halmann Vella's success is driven by seamless coordination between its procurement, production, and on-site teams. This ensures timely delivery and high-quality results, making Halmann Vella a reliable partner in surface installation that elevates the aesthetics and functionality of every space.



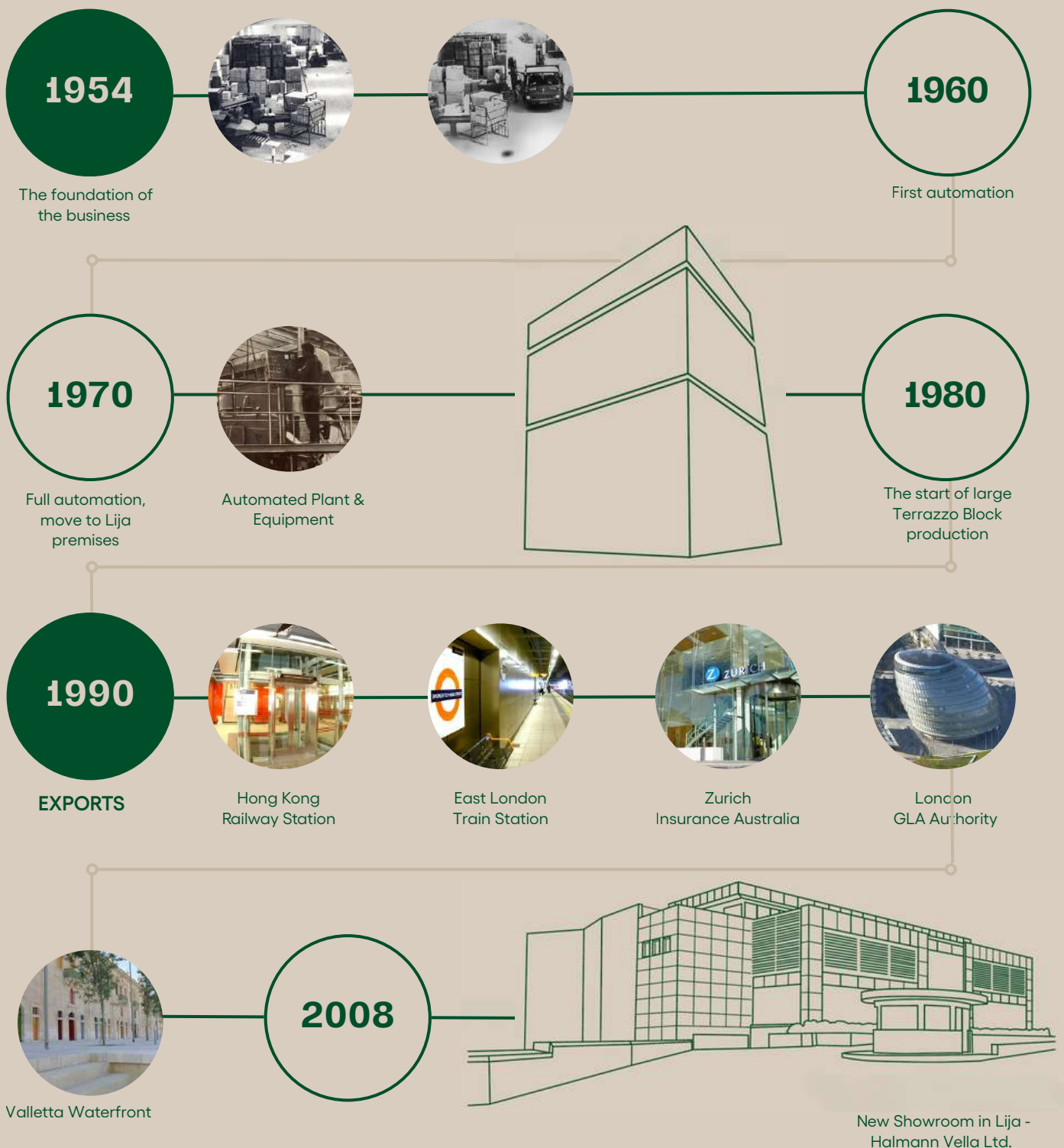
A Visionary Brand

Halmann Vella is more than just a manufacturer; it is a visionary brand shaping beautiful spaces and setting standards for distinction. The company continues to push the boundaries of design, combining innovative technology with time-honoured expertise. Its commitment to reliability and sustainability positions Halmann Vella as a leader in the construction and design industries, delivering exceptional solutions for both large-scale developments and domestic designs.



Our Mission

Recobel, a new product by Halmann Vella Group, is dedicated to prioritise clients' needs and expectations in every aspect of its operations. One of its primary objectives is to develop eco-conscious products that are both practical and exceed industry standards in durability and functionality. Recobel also aims to set new benchmarks within the industry by adopting innovative technologies and processes that promote ethical, resource-efficient practices, contributing to a greener and more sustainable world.





2014

A 440kWh solar panel system was installed in our Lija factory. This system contributes to an average annual reduction of 52 tons of CO₂. In addition to this, another larger installation of 480kWh is installed in our second factory in Hal Far. Water recycling systems installed in both our facilities makes it possible to filter and reuse at least 200,000 litres of water per day.

2016



Life Sciences Park



e-cabs new offices

2018



e-Pantar



Piazza Tigné

2019



Rosselli AX Privilege Hotel

2020



Urban Hotel Lobby flooring



Surface Design Show - London

2022



Trident Park



Farsons Brewery

2024



New batching plant Hal Far



Automation



Innovation Hub



Strength Meets Sustainability



Pressed Building Products Division

The Pressed Products Division specialises in the manufacture of high-performance building and landscape elements, combining Maltese architectural heritage with modern engineering principles. All products are developed to meet today's requirements for sustainability, durability, and construction performance while preserving the character of traditional building materials.

Production is carried out under controlled factory conditions using advanced pressing technology. Carefully selected raw materials are batched and compressed under high pressure to produce dense, dimensionally accurate units with consistent quality. Each stage of the manufacturing process is monitored and quality-controlled to ensure compliance with applicable standards and long-term performance.

New Franka – Solid Masonry Blocks

New Franka is a solid pressed block inspired by traditional Maltese building elements and re-engineered for contemporary construction needs. Designed as a modern interpretation of local architectural identity, New Franka offers improved mechanical strength, enhanced durability, and optimised thermal and acoustic performance.

The solid nature of the block allows it to be used in both load-bearing and non-load-bearing applications, providing architects, engineers, and contractors with a reliable and sustainable building solution suited to modern construction practices.

Cladding Panels for Ventilated Facades

The pressed cladding range is specifically engineered for ventilated façade systems, offering both functional performance and architectural expression. Panels are produced with precision pressing to achieve uniform thickness and surface quality, ensuring ease of installation and long-term façade stability.

Standard panel sizes include:

- 900 × 600 mm
- 1000 × 300 mm

These proportions allow for flexible façade layouts while maintaining compatibility with contemporary fixing systems. The cladding panels contribute to improved building envelope performance, moisture management, and overall façade longevity.

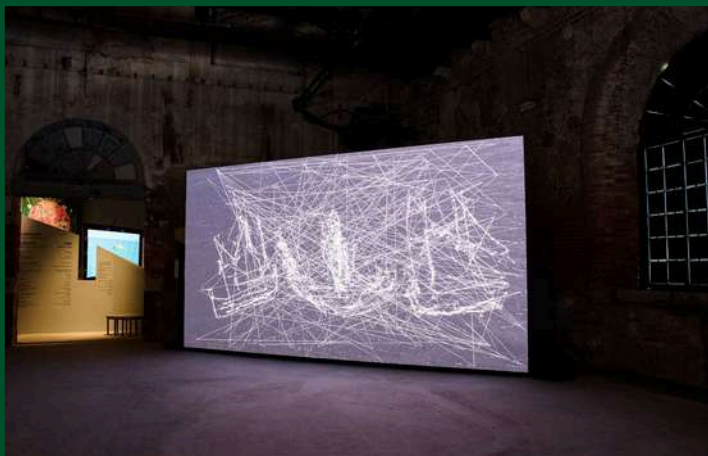
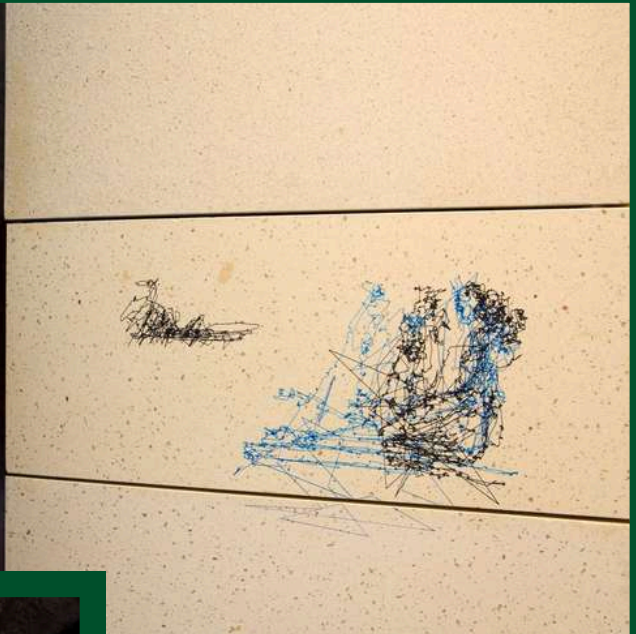
Landscaping Collection

The Landscaping Collection encompasses a range of pressed external products designed for durability, safety, and visual coherence in outdoor environments. Manufactured to withstand heavy use and exposure to varying weather conditions, the collection offers reliable solutions for public and private spaces.

The range includes:

- Paving units
- Kerbs
- Steps

These products are suitable for streetscapes, pedestrian areas, plazas, gardens, and hard landscaping projects where performance and aesthetics must go hand in hand.



Environmental Credentials

Sustainability is embedded in our culture and is considered as one of our organisation's prime core values. The company has invested in technologies that ensures green, stream-lined production processes, where plant and equipment run on regeneration of water waste and solar energy.

Certified renewable solar energy **97%**.

Water re-cycling/reclamation **98%**.

Investment in energy-efficient and emission-controlled technologies for greener operations.

1.5MW of Solar Power Output.

Recobel contributes to circular economy by transforming discarded C&D waste into **high-quality building products**, minimising the need to extract natural resources. This also lessens the need for landfills and ensuring public spaces are utilised for community-appropriate needs and uses.

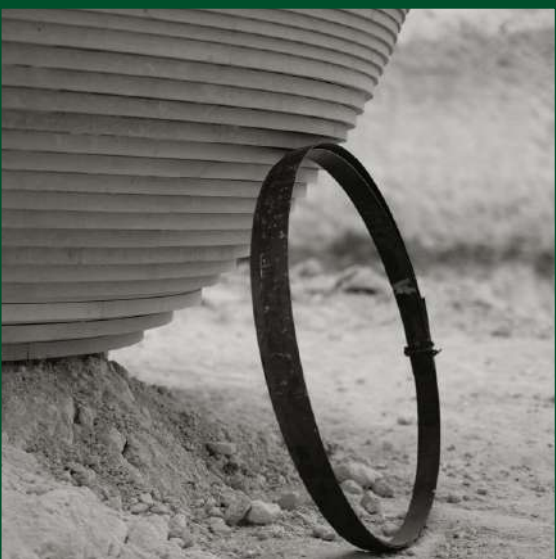
Implementing advanced automation to optimise energy consumption and reduce carbon footprint in the manufacturing process.

Extensive reservoirs are built under the premises in Lija and Hal Far where recycled and rain water is harvested and used for production.

We ensure **efficient supply chain management**.

Company runs in accordance to **local & international** operating standards.





Production Process

How it's made - Pressed Products

Our press products are manufactured using carefully selected marble and granite aggregates in a wide range of sizes and colours, sourced from various European and Mediterranean regions. The aggregates are precisely graded and combined with high-performance cementitious binders and pigments to achieve consistent colour and strength.

Raw materials are individually weighed and mixed in controlled batches to ensure accuracy and repeatability. The prepared mix is then fed into moulds and compacted under high pressure using hydraulic presses. This pressing process guarantees high density, dimensional stability, and excellent surface definition.

Once pressed, the tiles or elements are de-moulded and

transferred to a controlled curing environment, where they are left to mature and gain their full mechanical properties. After curing, the products undergo surface processing to achieve the desired finish.

Pressed products can be finished in a variety of surface textures, including polished, honed, brushed, or non-slip finishes, depending on functional and aesthetic requirements. Final quality checks ensure uniform thickness, colour consistency, and surface performance before packaging.

For bespoke applications, pressed terrazzo products can be cut, edge-finished, and machined to custom sizes and shapes using in-house cutting and CNC equipment, allowing for flexibility in architectural and interior design projects.







Our Colours



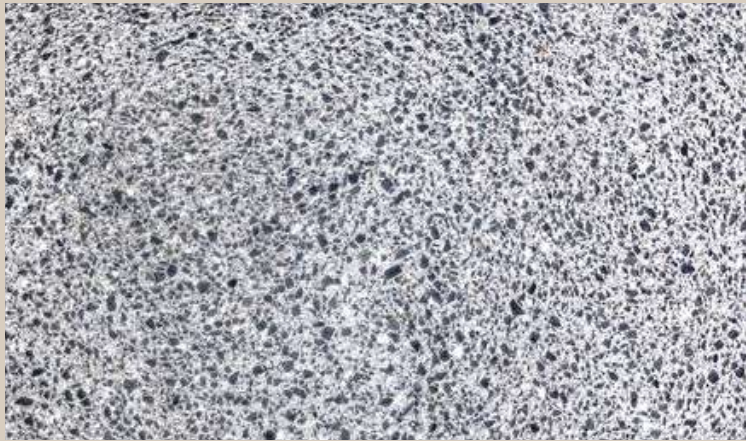
Basalto



Crema



Grigio



New Franka



A close-up photograph of several layers of light-colored wooden planks stacked on top of each other. The planks are oriented diagonally from the bottom-left to the top-right. The wood grain is visible, and there are some small dark spots and imperfections on the surface. The text "Applications..." is overlaid in a bold, green, sans-serif font in the center of the image.

Applications...

XL slabs

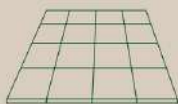
Recobel's reconstituted stone slabs are available in 3000mm x 1200mm sizes.

Recobel slabs are supplied in thickness of 30mm, 50 mm and 80 mm.



3000 x 1200

*measurements given in millimeters



Thickness	Floor		Cladding		Stairs	Vanity Tops
	<60 by 120	120 by 120	Internal	Ventilated		
20mm	●		●			
30mm	●	●	●	●	●	●

50mm and 80mm available upon request.

The guidelines shown in the table above indicate recommended thickness and panel sizes according to the element being considered.

Paving & Cladding

400mm x 400mm, 900mm x 600mm and 1000mm x 300mm are available upon request and against an order with a minimum quantity of 1000sqm.

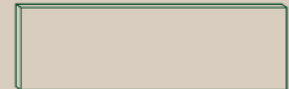
Recobel pavers are supplied in thicknesses of 22mm, 30mm and 45mm.



400 x 400



900 x 600



1000 x 300

*measurements given in millimeters

Thickness	Internal	Internal	External	External
	standard foot traffic	high foot traffic	limited vehicular access	vehicular access
22mm	●	●*		
30mm	●	●*	●	
45mm		●	●	

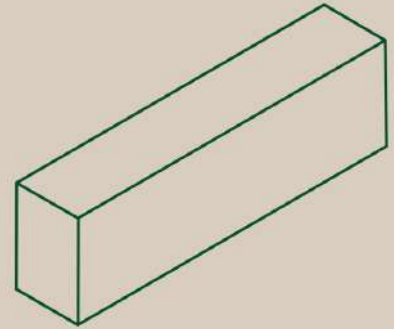
This is applicable to 400mm x 400mm, 900mm x 600mm and 1000mm x 300mm pavers.

* depending on sub-strate and product

The guidelines shown in the table above indicate recommended thickness for the setting in which these pavers are being considered.

Building Solutions

The solid Kantun, available in New Franka colour, is for the construction of walls and built structures, each produced in the same selected mix to maintain visual and material consistency across the project.



Kerb Typologies	Length (L)	Height (H)	Width (T)
Kantun i	600	265	180
Kantun ii	600	265	200**

Textures

Hammered

A hammered surface is achieved by pounding the slab surface with a multi-pointed mechanical tool. This method creates a rugged surface full of little grazes at the impact points. Surface becomes non-slip making it suitable for external applications and the coloured binder within the terrazzo go lighter in shade.

Honed

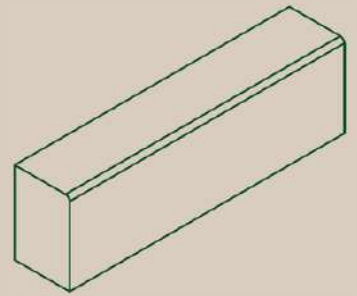
A honed finish is achieved by buffing the slabs with coarser abrasives than those used for polishing. Once the slabs are grinded and sanded down to the final finish, the resultant texture is smooth and matte. This finish is often implemented in areas where heavy foot traffic would wear off a polished finish. It is also suitable for internal and external wall claddings located in warm environments.

*measurements given in millimeters

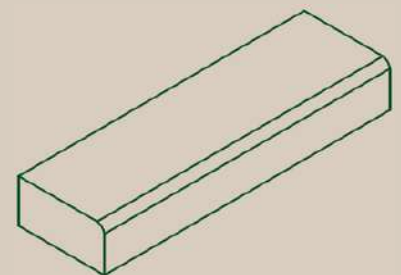
**available upon request

Kerbs and Solid Steps

Recobel's 'Landscaping Solutions' product line was detailed to create a one-stop shop experience for architects designing and implementing a landscape project. From pavers to sills and coping, our range extends to cater for kerbs and solid steps in the same terrazzo mix chosen for the project to ensure a homogeneous design solution.



Kerb Typologies	Length (L)	Height (H)	Width (T)
Type i	600	265	180
Type ii	600	265	200
Type iii	1000	300	180
Type iv	1000	300	200



Solid Step	Length (L)	Height (H)	Width (T)
Type i	1000	150	300

*measurements given in millimeters

Textures

XL slabs have a raw surface texture when cut into panels. Each slab undergoes a honed surface application as a standard for quality assurance purposes before material is exported to customers for further processing.

Recobel offers four different texture possibilities such as polished, honed, brushed and bush-hammered brushed.

Polished

A shiny surface is achieved by grinding the slab with a series of fine diamond grit pads or compounds. The resultant texture is very smooth and not very porous. The final shine finish gives an elegant aesthetic.

Honed

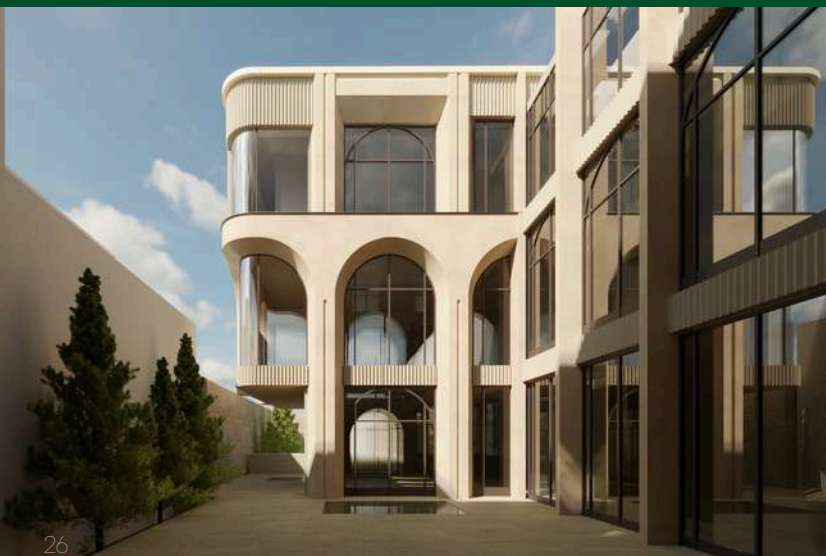
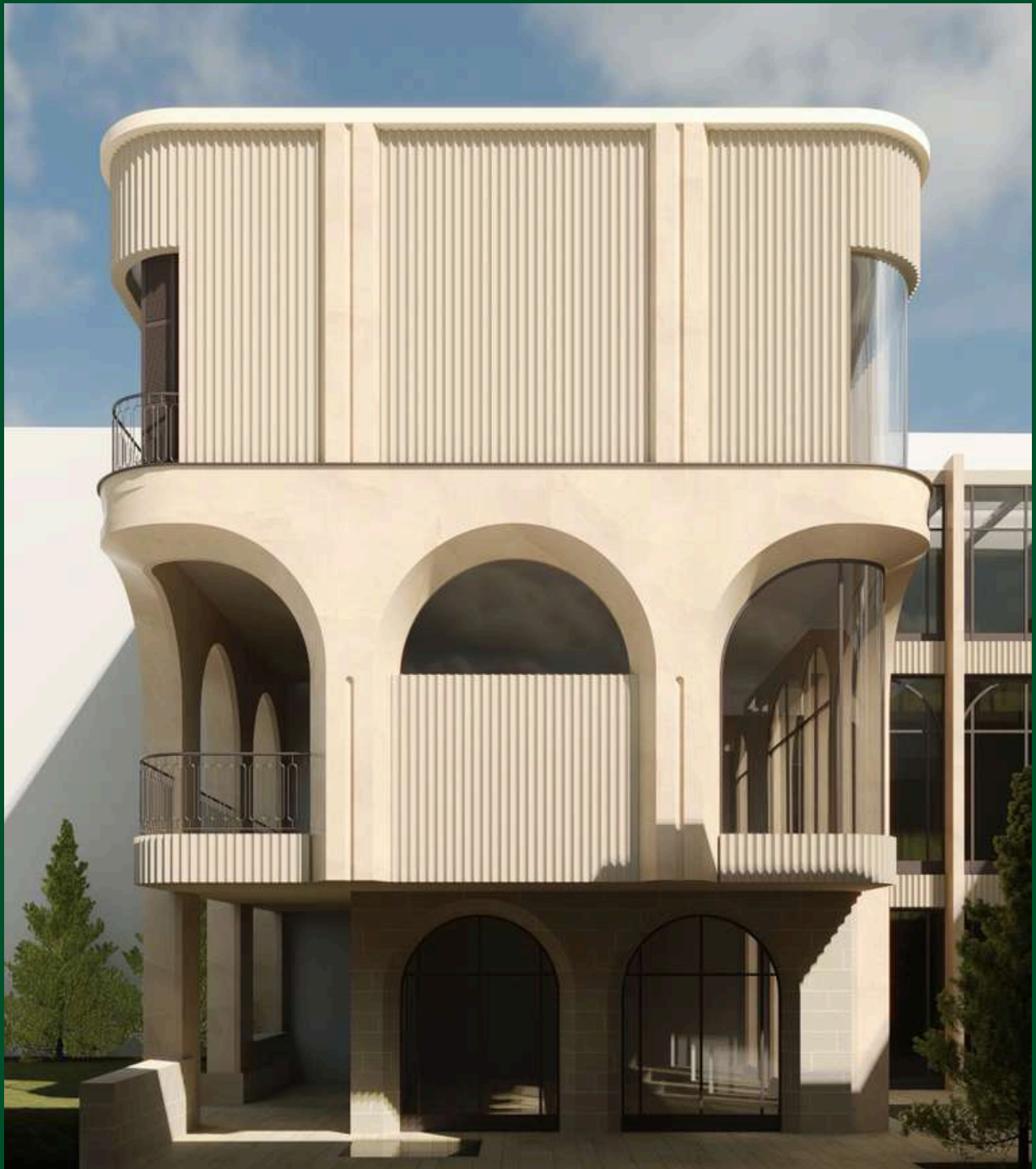
A honed finish is achieved by buffing the slabs with coarser abrasives than those used for polishing. Once the slabs are grinded and sanded down to the final finish, the resultant texture is smooth and matte. This finish is often implemented in areas where heavy foot traffic would wear off a polished finish. It is also suitable for internal and external wall claddings located in warm environments.

Brushed

This is carried out by brushing the panels with steel or hard nylon pads. This application leaves a lightly textured surface that tends to make the panels more resilient to scratches and marks.

Hammered & Brushed

A hammered & brushed surface is achieved by pounding the slab surface with a multi-pointed mechanical tool. This method creates a rugged surface full of little grazes at the impact points. Surface becomes non-slip making it suitable for external applications and the coloured binder within the terrazzo go lighter in shade.



Upcoming Projects



International Clients



Australia
Canada
France
Germany
Hong Kong
Ireland
Italy
Japan
Libya
Netherlands
Norway
Sri Lanka
Sweden
United Kingdom
USA
Vietnam



recobel[®]


a Halmann Vella brand

Company Registered Address

Halmann International Ltd.
The Factory
Mosta Road
Lija, LJA9016
Malta

Manufacturing & Dispatch Address

Recobel
H59
Halfar Industrial Estate
Birzebbuga, BBG3000
Malta

 +356 2143 3636

 hello@recobel.eu

 recobel.eu