

recobel[®]
a Halmann Vella brand



ARCHITECTURAL TERRAZZO
PRODUCT GUIDE

2026

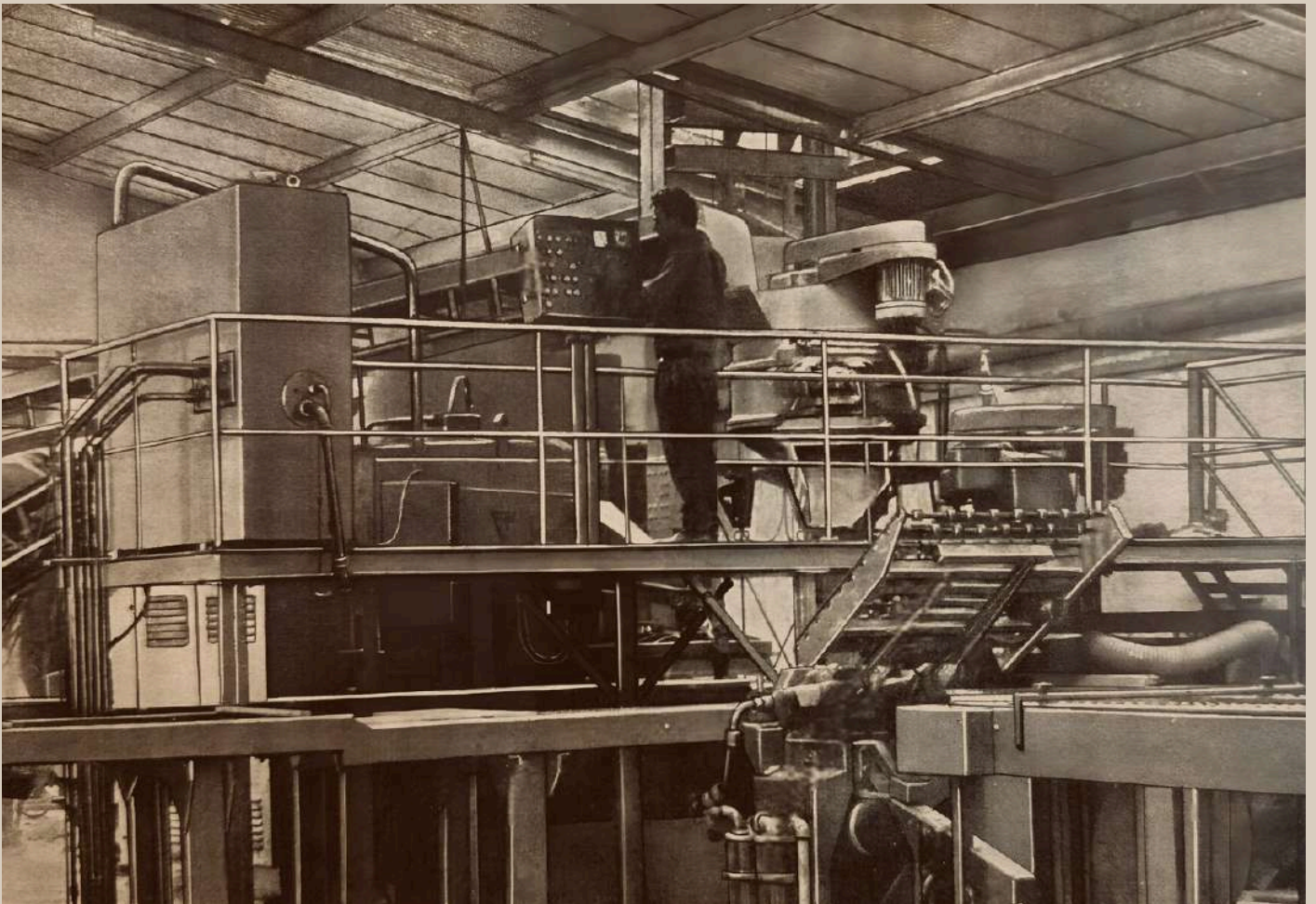


Table of Contents

Page	Chapter
3	The Group's Story
4	Strategic Location
5	Expertise in Terrazzo, Natural Stone
6	The Civil & Finishes Works Contractor
8	A Visionary Brand
9	Our Mission
11	Cement-based Architectural Terrazzo Blocks
12	Environmental Credentials
13	Production Process
14	From Our Collection
22	Binder Colours
23	XL Slabs
24	Terrazzo Pavers
25	Kerbs and Solid Steps
26	Textures
27	Edges
28	Flooring
35	International Clients
37	Cladding
39	Stairs
41	Bathrooms
42	Counter
43	Terrazzo Specifications

The Group's Story

Halmann Vella is a publicly listed company and one of Malta's largest manufacturers and suppliers of premium stone, terrazzo, and architectural solutions. Known for its stability and trustworthy reputation, the company has grown from a small enterprise into one of the leading companies in the industry, blending tradition with advanced technology. With over 70 years of experience, Halmann Vella now operates with over 200 employees and cutting-edge production facilities in Lija and Hal Far. The company's evolution reflects a strong legacy and a commitment to excellence and innovation.



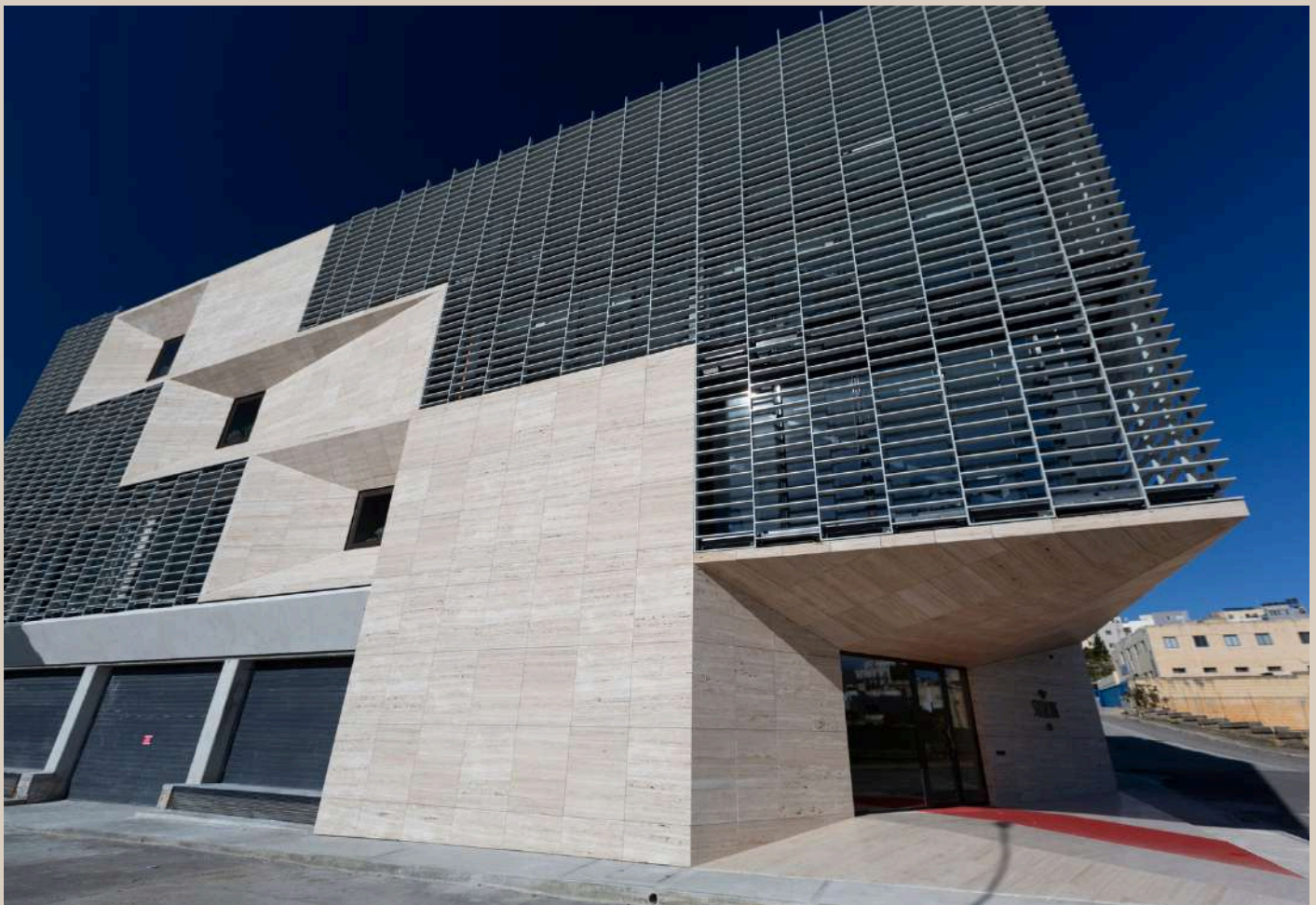
Strategic Location

As a Maltese company strategically positioned in the heart of the Mediterranean, Halmann Vella benefits from its prime location and proximity to the Malta Freeport. This enables ideal integration into global supply chains, connecting Europe and North Africa. The company's location provides efficient export operations, supports the local market, and reinforces its position as a significant stakeholder in both domestic and international commerce.



Expertise in Terrazzo, Natural Stone, and Surfacing Solutions

The cement tile was the first element on the production line, skillfully prepared and pressed with mechanical machines that were manned by the local artisans. Today, Halmann Vella is renowned for its expertise in producing high-quality surfacing materials, specialising in terrazzo, natural stone from certified quarries across the globe and architectural solutions. The company's portfolio includes customised creations, such as large-scale facades and intricate design elements like countertops, vanities, and cladding. Halmann Vella's work is distinguished by its collaborations with renowned architects, including the internationally acclaimed Renzo Piano, as well as other established designers, ensuring that each project reflects the highest standards of quality, precision, and sustainability.



The Civil & Finishes Works Contractor

Halmann Vella is a trusted contractor for civil and finishing works alike. The company undertakes complex projects across commercial, residential, and public sectors. From large-scale facades to detailed, bespoke concepts, Halmann Vella's success is driven by seamless coordination between its procurement, production, and on-site teams. This ensures timely delivery and high-quality results, making Halmann Vella a reliable partner in surface installation that elevates the aesthetics and functionality of every space.



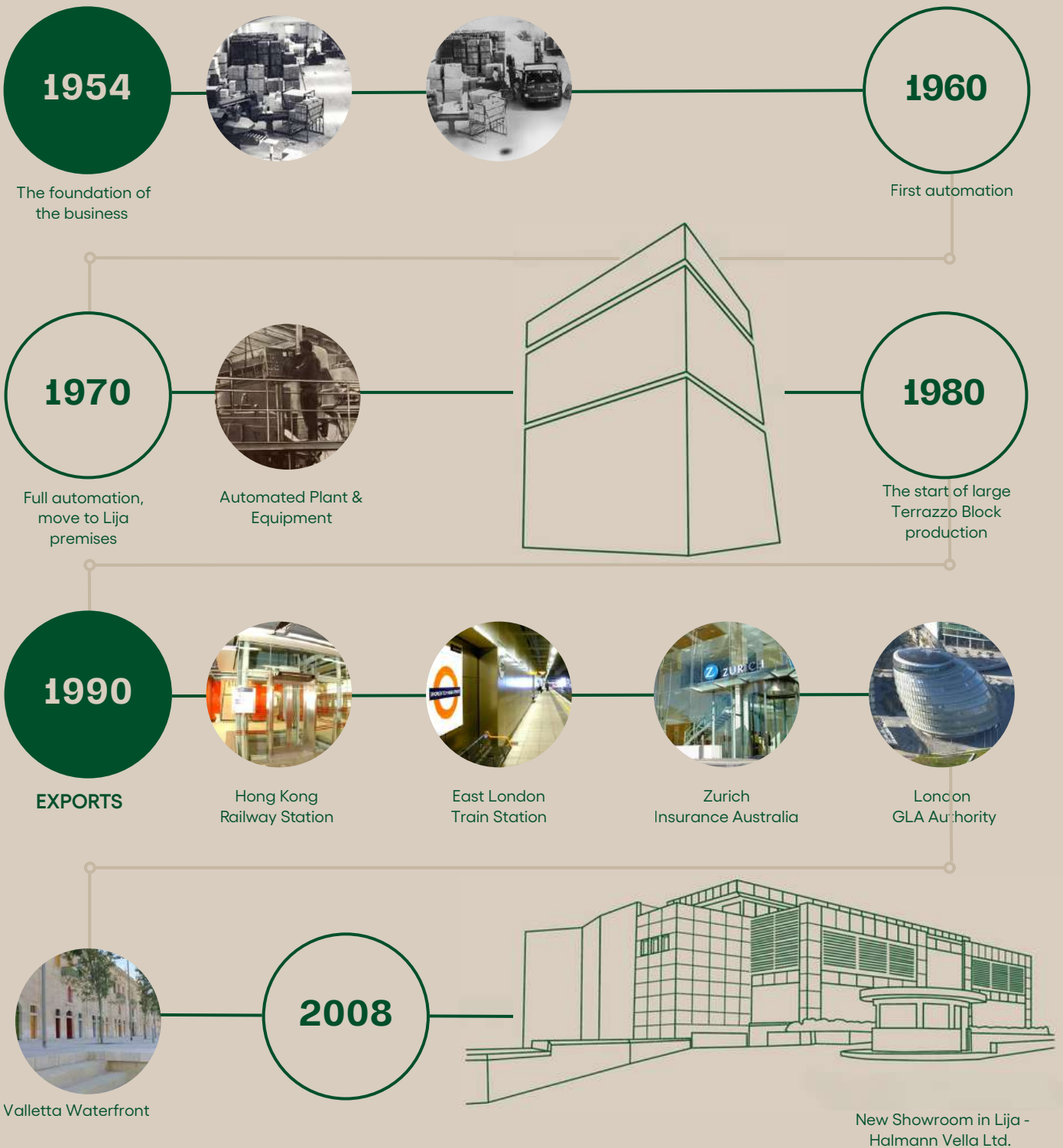
A Visionary Brand

Halmann Vella is more than just a manufacturer; it is a visionary brand shaping beautiful spaces and setting standards for distinction. The company continues to push the boundaries of design, combining innovative technology with time-honoured expertise. Its commitment to reliability and sustainability positions Halmann Vella as a leader in the construction and design industries, delivering exceptional solutions for both large-scale developments and domestic designs.



Our Mission

Recobel, a new product by Halmann Vella Group, is dedicated to prioritise clients' needs and expectations in every aspect of its operations. One of its primary objectives is to develop eco-conscious products that are both practical and exceed industry standards in durability and functionality. Recobel also aims to set new benchmarks within the industry by adopting innovative technologies and processes that promote ethical, resource-efficient practices, contributing to a greener and more sustainable world.





2014

A 440kWh solar panel system was installed in our Lija factory. This system contributes to an average annual reduction of 52 tons of CO₂. In addition to this, another larger installation of 480kWh is installed in our second factory in Hal Far. Water recycling systems installed in both our facilities makes it possible to filter and reuse at least 200,000 litres of water per day.

2016



Life Sciences Park



e-cabs new offices

2018



e-Pantar



Piazza Tigné

2019



Rosselli AX Privilege Hotel

2020



Urban Hotel Lobby flooring



Surface Design Show - London

2022



Trident Park



Farsons Brewery

2024



New batching plant Hal Far



Automation



Innovation Hub



Strength Meets Sustainability



Cement-based Architectural Terrazzo Blocks

The Group is now producing Architectural Terrazzo under Recobel, at a purposely built factory located in the premises of Hal Far. The manufacturing process is programmed in an automated production line where each step is recorded, and QA/QC checked.

The block process involves batching, vibrating and vacuuming the cast under controlled conditions to ensure a high-quality homogeneous mix. Once cured, the 3m (L) x 1.2m (W) x 0.80m (H) blocks are ready for further processing.

The size of the blocks provides architects and interior designers with the flexibility of customising their designs for their projects' scope of works. In view of this, blocks can be cut into XL slabs that could be applied either for large format flooring and wall cladding or machined to create 3D solid architectural elements.

A Versatile terrazzo cement composite surface design is ideal for the following applications:

- Ventilated facade cladding
 - Stairs
 - Internal cladding
 - Floors
 - Bathrooms
 - Custom shapes, large formats and cut to size
 - Interior bespoke elements - on request
-

Environmental Credentials

Sustainability is embedded in our culture and is considered as one of our organisation's prime core values. The company has invested in technologies that ensures green, stream-lined production processes, where plant and equipment run on regeneration of water waste and solar energy.

Certified renewable solar energy **97%**.

Water re-cycling/reclamation **98%**.

Investment in energy-efficient and emission-controlled technologies for greener operations.

1.5MW of Solar Power Output.

Recobel contributes to circular economy by transforming discarded C&D waste into **high-quality building products**, minimising the need to extract natural resources. This also lessens the need for landfills and ensuring public spaces are utilised for community-appropriate needs and uses.

Implementing advanced automation to optimise energy consumption and reduce carbon footprint in the manufacturing process.

Extensive reservoirs are built under the premises in Lija and Hal Far where recycled and rain water is harvested and used for production.

We ensure **efficient supply chain management**.

Company runs in accordance to **local & international** operating standards.



Production Process

How it's made

Recobel stocks a range of marble/granite aggregate sizes and colour binders that originate from various regions within the European and Mediterranean region. Aggregates are batched according to size, delivered in big-bags and stored in silos integrated with the automated set-up of the facility. The plant was designed to cater for over thirty materials directly in-line to ensure production flexibility.

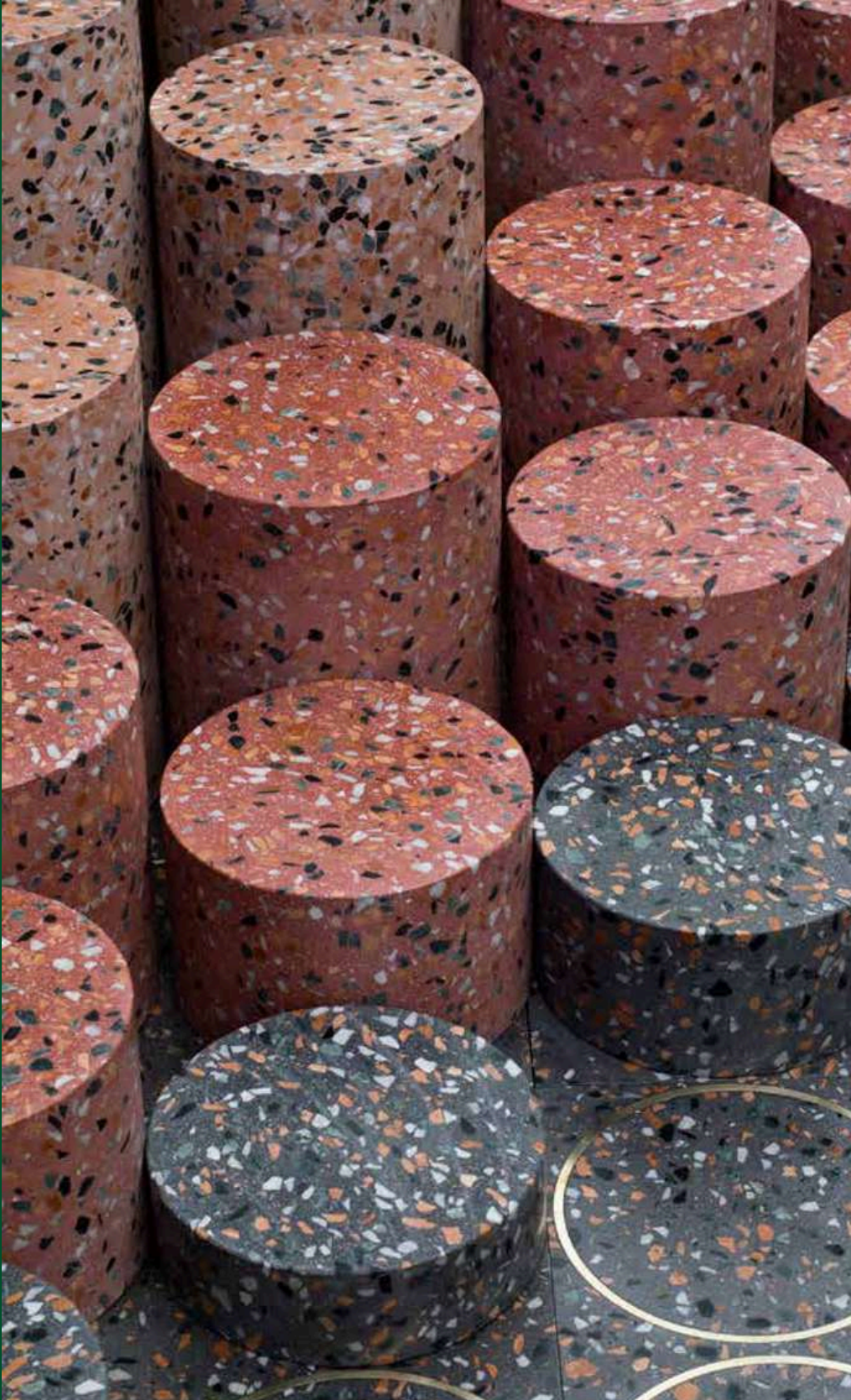
Batching is carried out with the latest generation planetary mixers. The mould is then placed inside a chamber and rotated under a vacuum for a homogenous mix. Following this process, blocks are then de-moulded and left to cure for 28 days.

Blocks are then cut unto XL slabs in the standard 20mm or 30mm thicknesses. Some slabs can be finished in polished, honed, brushed or hammered brushed textures.

For specific designs and forms, architectural terrazzo can be machined into customisable shapes using in-house cutting and CNC machines.



From Our Collection

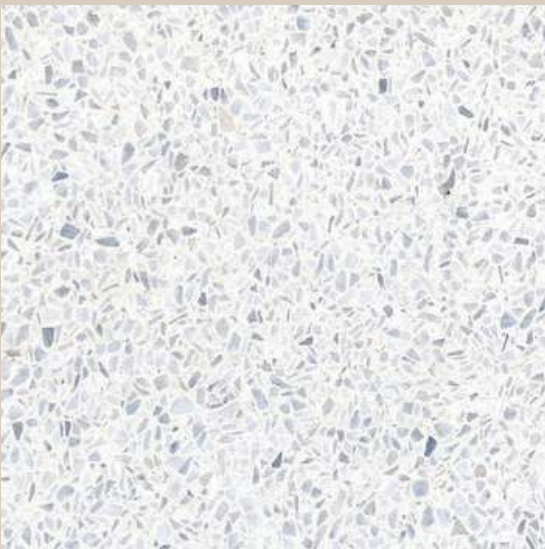




Snow XL
903WHT



Cosmic Latte
511WHT



Snow
500WHT



Silverstone Meadow
302WHT



White Medley
704WHT



Amber Grey
703WHT



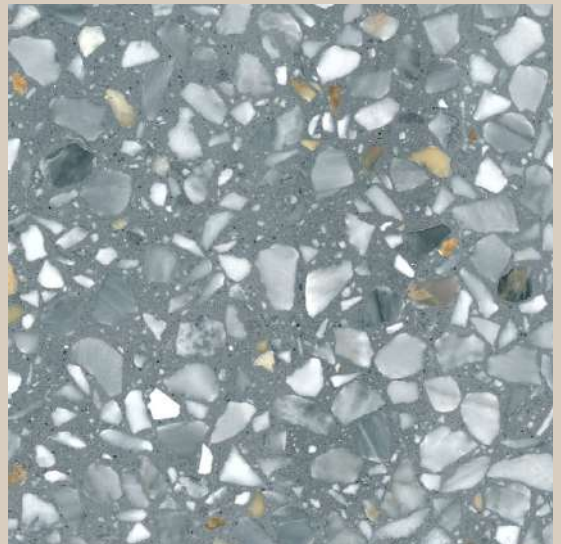
Silver Glacier
718WHT



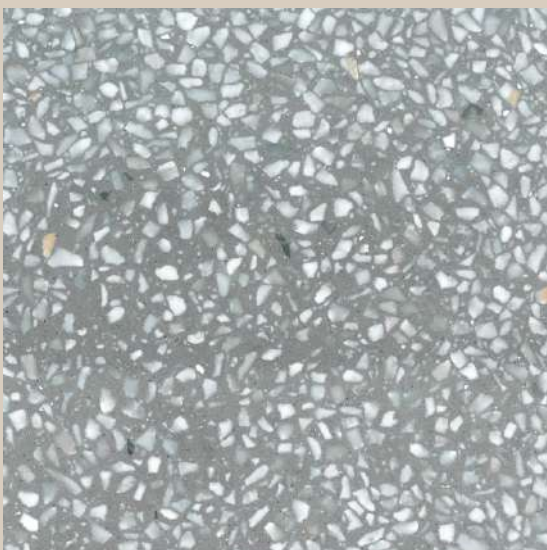
Arctic Frost
904MGY



Light Graphite Gold
705LGY



Graphite Gold
705DGY



Steel Grey
501MGY



Piazza Dark Grey
304DGY





Smoke Dark Grey
710DGY



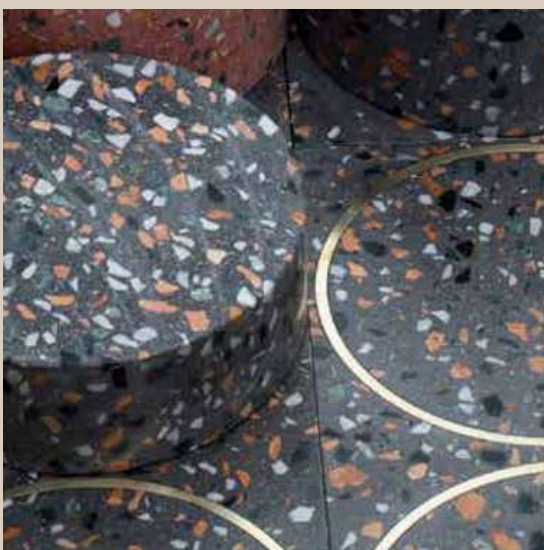
Charcoal
101BLK



Jet
104BLK



Urban
706LGY



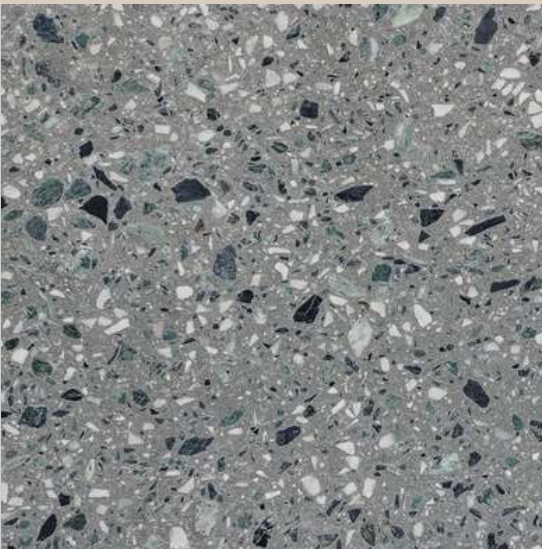
Garden Black
700BLK



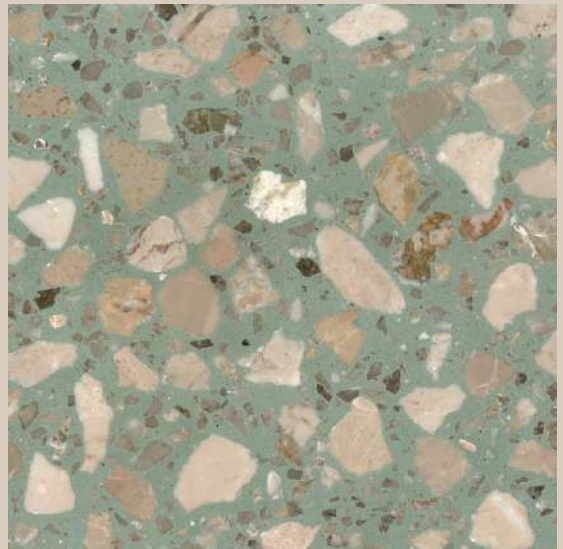
Valley Light Green
711LGN



Olive Medley
704OGN



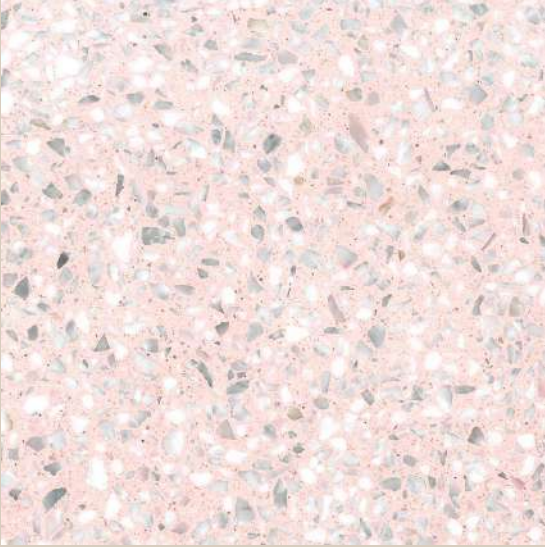
Forest Dark Green
709DGN



Olive Brown
901OGN



Fossil
102BRN



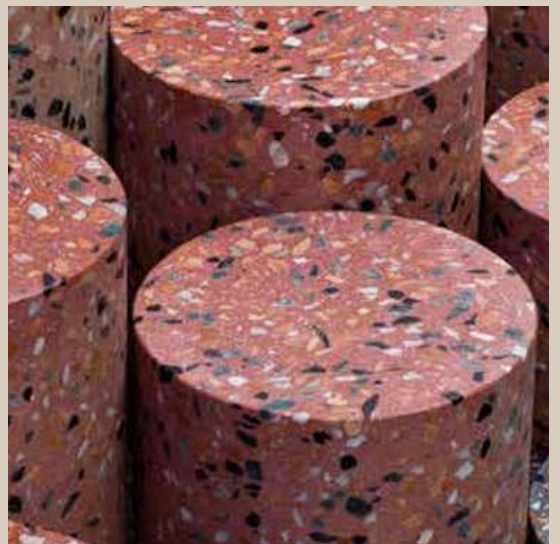
Peony Grey
500LPK



Blush Medley
704LPK



Garden Light Pink
701LPK



Garden Red
701RED

Binder Colours

Halmann Vella has 24 standard cement colours available to choose from. The combinations of cement and aggregate colours that can be achieved is endless.



Yellow



Red



Olive Green



Dark Blue



Grey Brown



Choc Brown



Sand



Coral



Green



Blue



Tan



Brown



Salmon



Pea Green



Pale Blue



Khaki



Cotto



Light Pink



White



Light Grey



Grey



Dark Grey



Black

XL Slabs

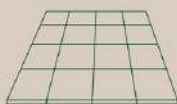
Recobel's architectural terrazzo XL slabs are available in 3000mm x 1200mm sizes.

Recobel slabs are supplied in thickness of 20mm and 30mm.



3000 x 1200

*measurements given in millimeters



Thickness	Floor		Cladding		Stairs	Vanity Tops
	<60 by 120	120 by 120	Internal	Ventilated		
20mm	●		●			
30mm	●	●	●	●	●	●

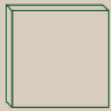
50mm and 80mm available upon request.

The guidelines shown in the table above indicate recommended thickness and panel sizes according to the element being considered.

Terrazzo Pavers

400mm x 400mm, 900mm x 600mm and 1000mm x 300mm are available upon request and against an order with a minimum quantity of 1000sqm.

Recobel terrazzo pavers are supplied in thicknesses of 22mm, 30mm and 45mm.



400 x 400

900 x 600

1000 x 300

*measurements given in millimeters

Thickness	Internal	Internal	External	External
	standard foot traffic	high foot traffic	limited vehicular access	vehicular access
22mm**	●	●*		
30mm	●	●*	●	
50mm		●	●	
80mm		●	●	

This is applicable to 400mm x 400mm, 900mm x 600mm and 1000mm x 300mm pavers.

*depending on sub-strate and product -

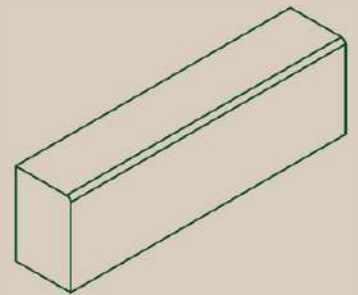
** on request

The guidelines shown in the table above indicate recommended thickness for the setting in which these pavers are being considered.

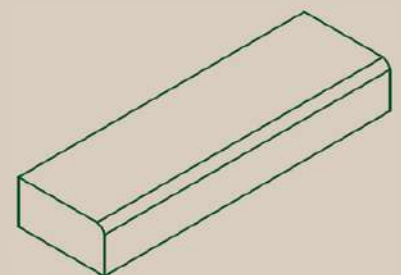
Paving Subbase shall be engineered to accommodate the paving loading above.

Kerbs and Solid Steps

Recobel's 'Landscaping Solutions' product line was detailed to create a one-stop shop experience for architects designing and implementing a landscape project. From pavers to sills and coping, our range extends to cater for kerbs and solid steps in the same terrazzo mix chosen for the project to ensure a homogeneous design solution.



Kerb Typologies	Length (L)	Height (H)	Width (T)
Type i	600	265	180
Type ii	600	265	200
Type iii	1000	300	180
Type iv	1000	300	200



Solid Step	Length (L)	Height (H)	Width (T)
Type i	1000	150	300

*measurements given in millimeters

Textures

XL slabs have a raw surface texture when cut into panels. Each slab undergoes a honed surface application as a standard for quality assurance purposes before material is exported to customers for further processing.

Recobel offers four different texture possibilities such as polished, honed, brushed and bush-hammered brushed.

Polished

A shiny surface is achieved by grinding the slab with a series of fine diamond grit pads or compounds. The resultant texture is very smooth and not very porous. The final shine finish gives the architectural terrazzo an elegant aesthetic.

Honed

A honed finish is achieved by buffing the slabs with coarser abrasives than those used for polishing. Once the slabs are grinded and sanded down to the final finish, the resultant texture is smooth and matte. This finish is often implemented in areas where heavy foot traffic would wear off a polished finish. It is also suitable for internal and external wall claddings located in warm environments.

Brushed

This is carried out by brushing the panels with steel or hard nylon pads. This application leaves a lightly textured surface that tends to make the panels more resilient to scratches and marks.

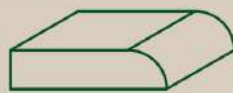
Hammered & Brushed

A hammered & brushed surface is achieved by pounding the slab surface with a multi-pointed mechanical tool. This method creates a rugged surface full of little grazes at the impact points. Surface becomes non-slip making it suitable for external applications and the coloured binder within the terrazzo go lighter in shade.

Edges



Straight Edge



Half Round



Mitered Edge



Full Round



Double Edge



Polished Underside

Flooring

Whether renovating a house of character or starting a new home project, the choice of material, style, and colour for the flooring can have a significant impact on the overall outcome. Recobel is dedicated to manufacture and supply flooring materials that complement both modern and traditional settings.

Piazza Tigne

Conceived as a mixed-use, lifestyle development, Tigne Point is currently best known for its luxurious apartments. This is complemented by 'The Point' shopping mall, Malta's largest retail centre, and the car-free Pjazz Tigne - the heart of this mixed-use project and the largest square in the fashionable Sliema district.



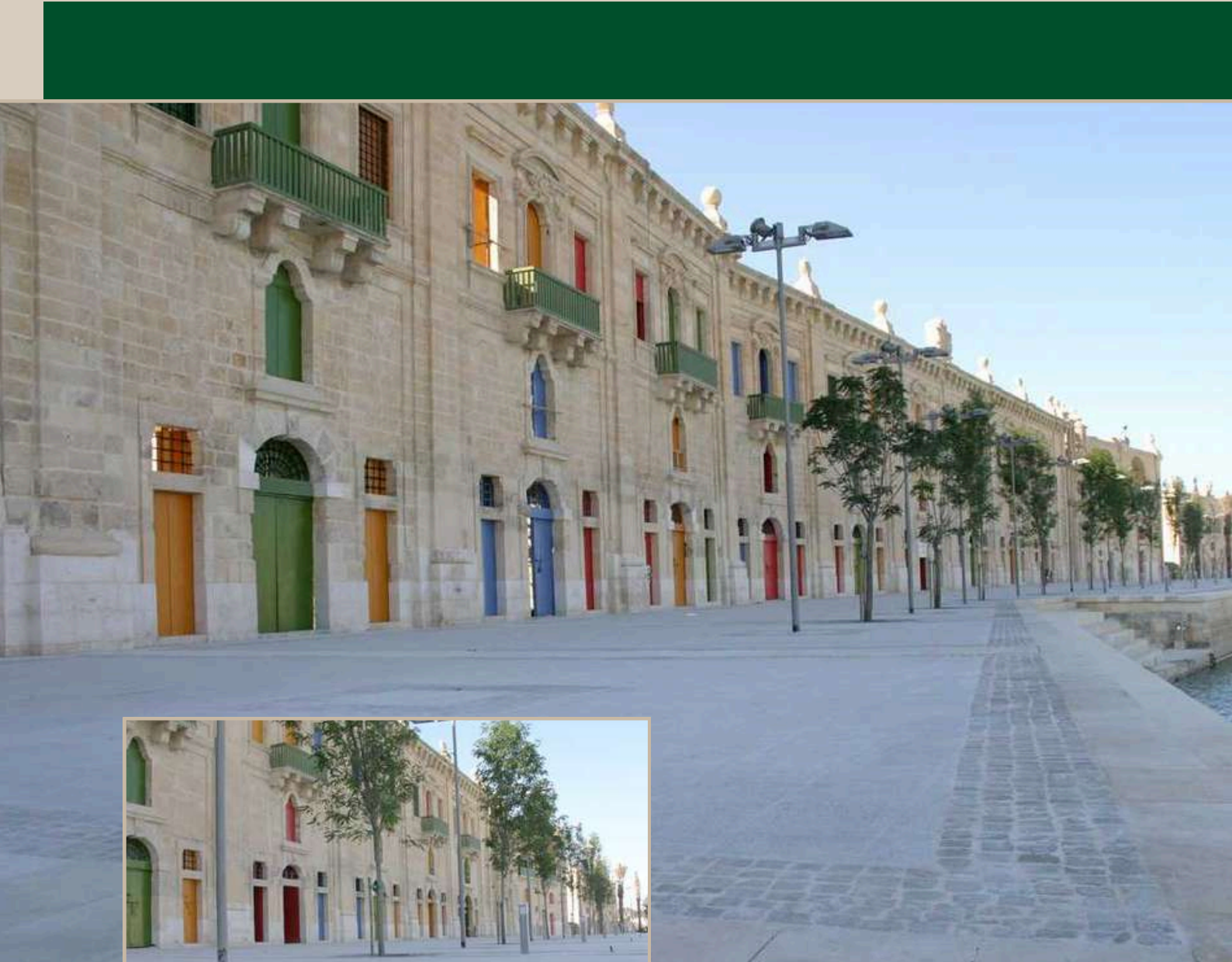
East London Railway - UK

The East London line is a London Overground line which runs north to south through the East End and Docklands areas of London. Originally part of the London Underground. The line forms part of a wider London Overground orbital network, which will allow passengers to travel around London on the line without having to enter central areas of the city. Halmann Vella developed in conjunction with the London based lead architects for the project, a special terrazzo flooring tile to meet the strict performance requirements demanded for this project.



Valletta Waterfront

The regeneration project at the Valletta waterfront was a skillful intervention of merging the restoration and rehabilitation of the historical urban fabric with mixed-use commercial development. Together with Project Architects, Halmann Vella Ltd. designed a custom-made terrazzo mix specifically for the project that covers approximately 2000sqm of land. A stone and terrazzo 'carpet' was laid along Pinto Stores creating an interface between landscape and seascape. The floor design features terrazzo carpets framed by the rings of porphyry cubes and natural stone.



Trident Park

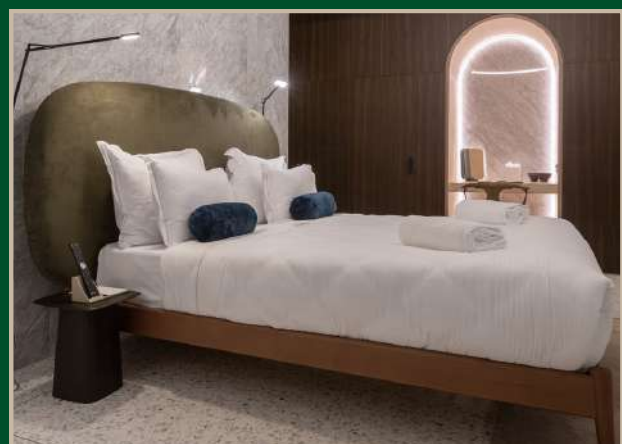
The regeneration project at the Valletta waterfront was a skillful intervention of merging the restoration and rehabilitation of the historical urban fabric with mixed-use commercial development. Together with Project Architects, Halmann Vella Ltd. designed a custom-made terrazzo mix specifically for the project that covers approximately 2000sqm of land. A stone and terrazzo 'carpet' was laid along Pinto Stores creating an interface between landscape and seascape. The floor design features terrazzo carpets framed by the rings of porphyry cubes and natural stone.



Rosselli AX Privilege

The Rosselli AX Privilege is the first 5-star hotel in the capital city Valletta. Rosselli is a hub of fresh architectural details, exposing guests to the perfect combination of new versus old.

Rosselli's concept revolves around 6 well thought-out sets of themed rooms, each furnished with distinctive features which render the suites bold, beautiful and elegant. The 'Cosmic Latte' terrazzo was used for flooring the Don Pietro suites and 'Pebbles' was used for the floor and wall cladding in the Mezza Croce rooms. 'Steel Grey' terrazzo was used as round ornaments inside door box frames and as 80,, thick solid railings in loggias and lounge spaces around the hotel.



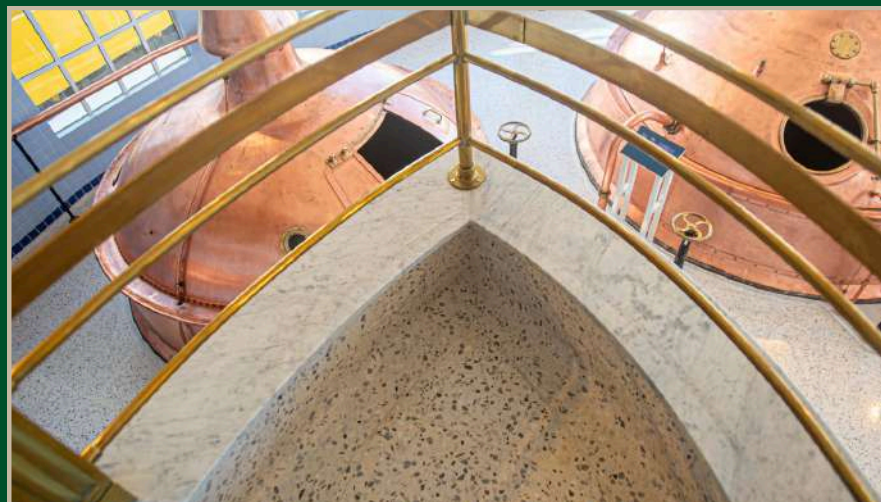
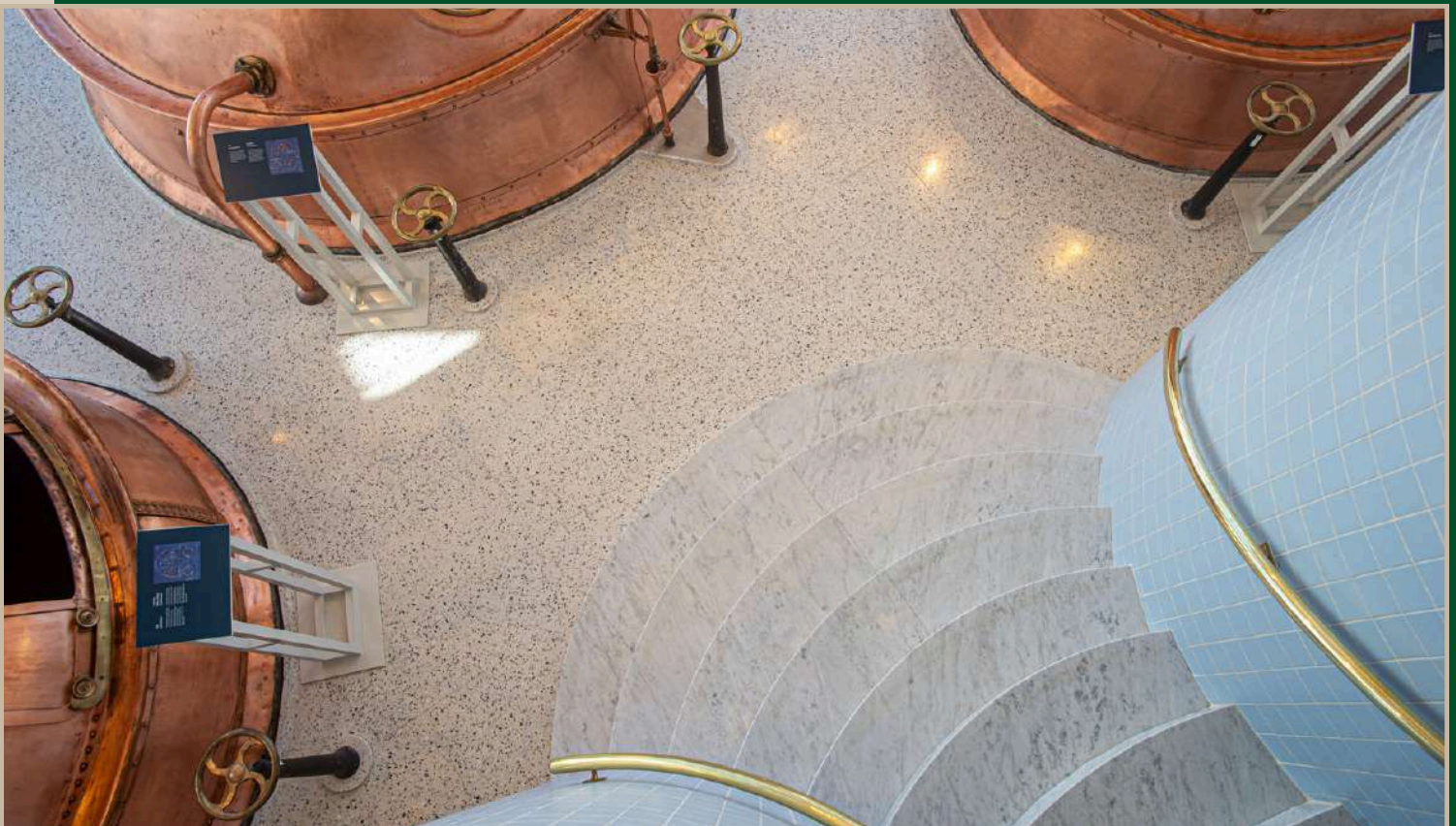
Piazzetta Business Plaza - Sliema

Is a recreational space in the middle of bustling Sliema. Two distinct terrazzo mixes from the Minima Collection were used to create whimsical patterns in the floor. The white terrazzo was also used to fabricate street furniture machined out of solid blocks.



Farsons Brewery

For the 'Farsons Brewery Experience' at the Old Brewhouse, the client's wish was to replicate the original terrazzo flooring, which was damaged in the late 1980s and was beyond repair. Halmann Vella produced and installed a customised terrazzo mix to suit the project's brief which respected the original aesthetic of the space.



International Clients



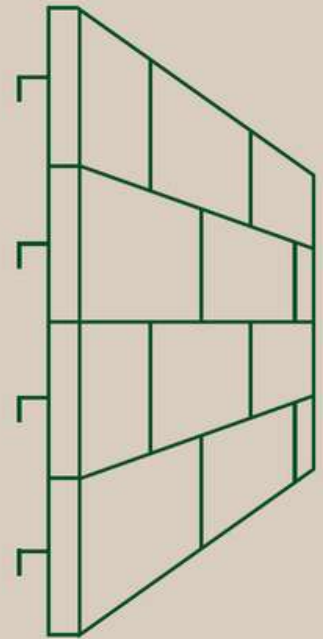
Australia
Canada
France
Germany
Hong Kong
Ireland
Italy
Japan
Libya
Netherlands
Norway
Sri Lanka
Sweden
United Kingdom
USA
Vietnam





Cladding

Rainscreen cladding is generally defined as panels that are individually supported and restrained allowing construction to take place with open points. Differential movement is accommodated in each joint, which negates the need for larger compression and expansion joints.



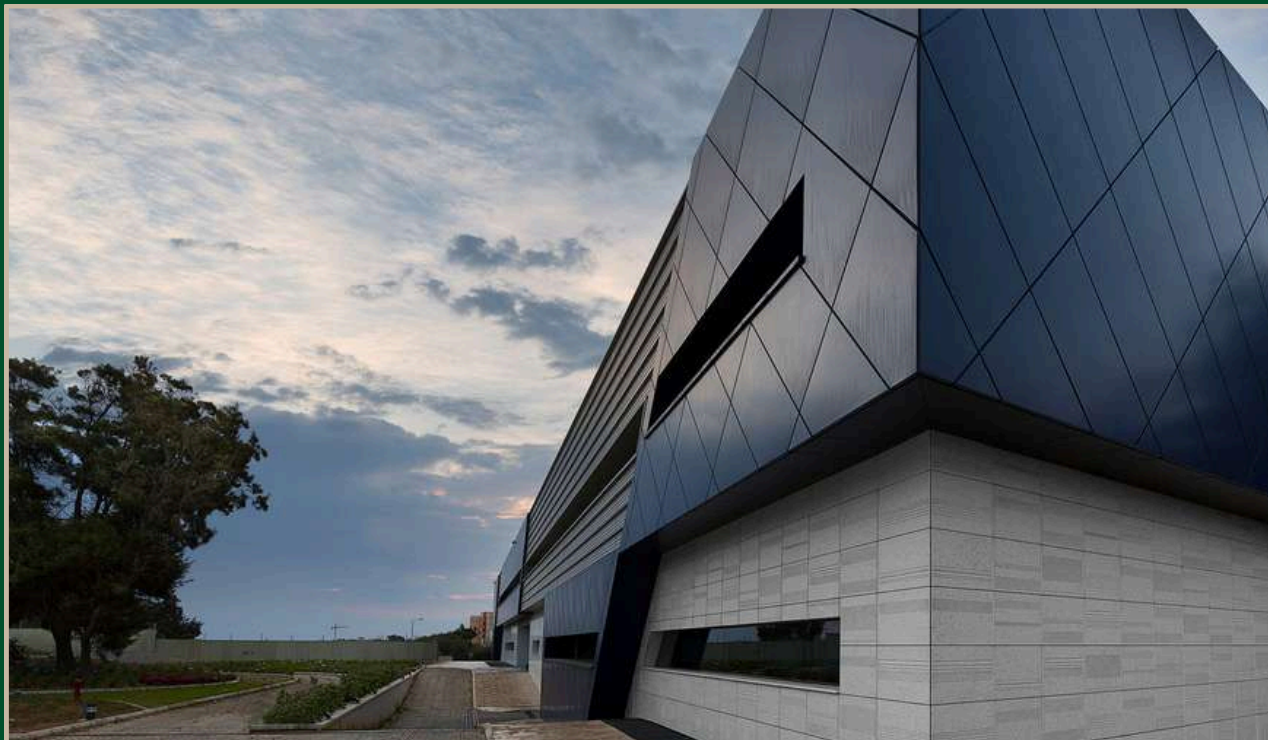
Life Sciences Park

Halmann Vella was the main surface supplier for the prestigious Life Sciences Park. The site covers an area of 11,000 square metres and was developed to cater for laboratories, lecture theatres, offices and meeting rooms intended for research, exploration and creativity purposes.

This project covered two main elements; a ventilated facade and external hard landscaping using the Silver Glacier terrazzo mix from the Classic Collection. The largest façade panels measured 1000mm x 600mm, whereas flooring pavers were cut to a maximum of 900mm x 600mm.

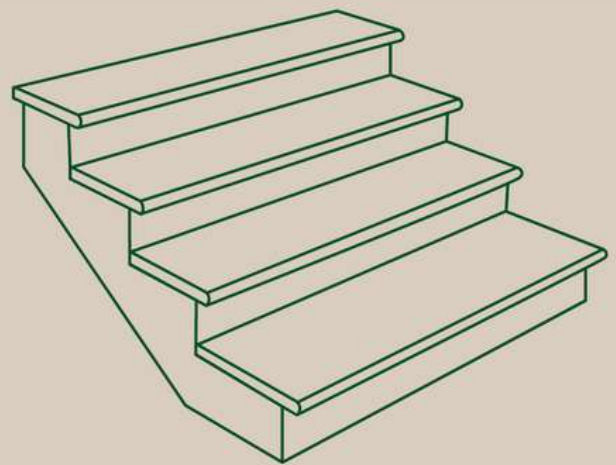
The scope of the project was to create a building with environmental credentials. A ventilated façade was implemented for its environmental benefits. The combination of structural walls, insulation and a terrazzo ventilated façade created a system which protects the building from thermal gains and losses hence improving the overall energy performance of the structure. The resultant gap between the structure and façade creates a natural stack effect that keeps the building cool in summer and warm in winter.

Life Science Park



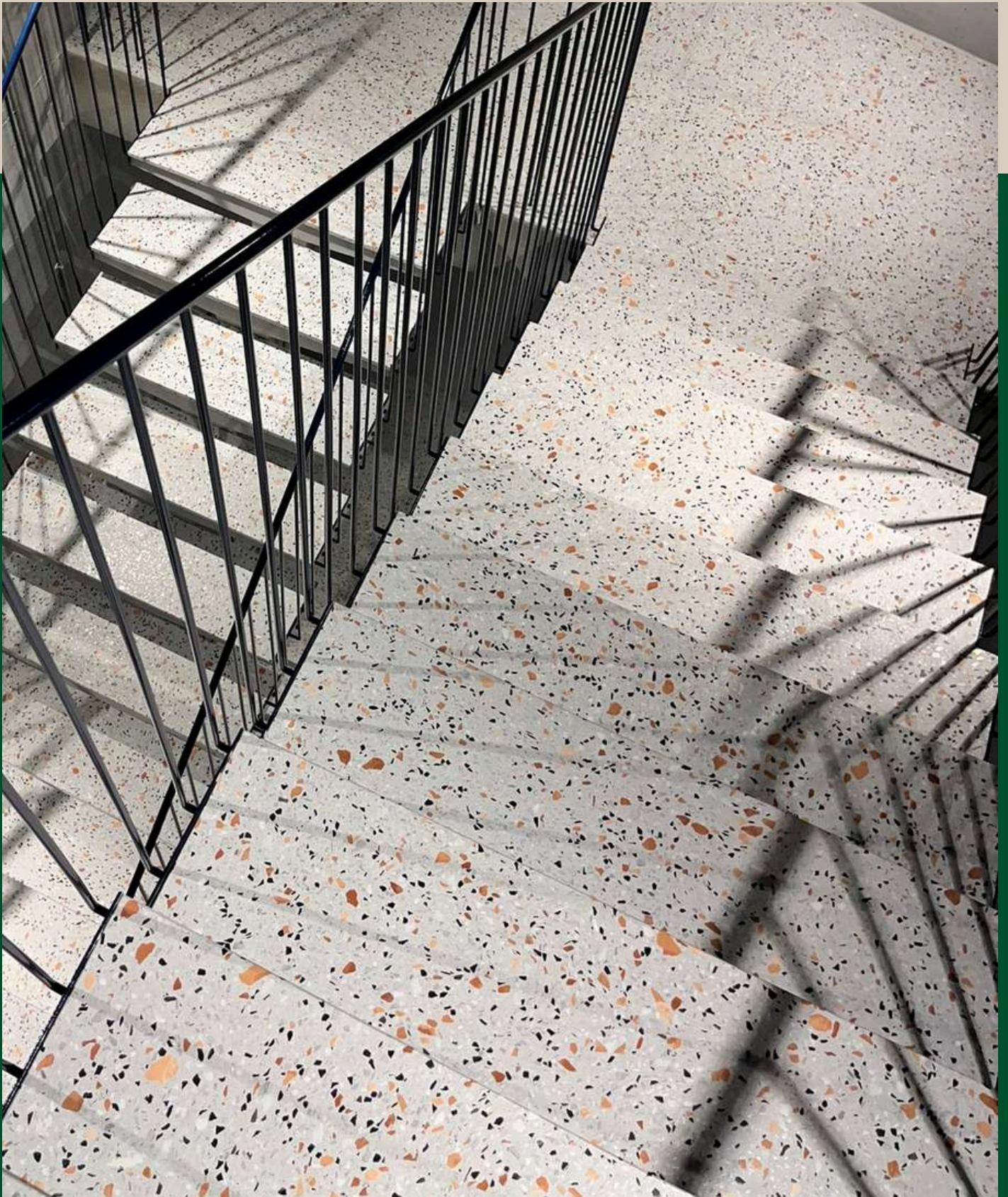
Stairs

Recobel manufactures staircases with meticulous attention to details, enhancing the character of any space. The design possibilities are extensive, offering options such as straight, rounded, or mitred edge details, as well as the introduction of shadow gaps between the thread and riser. Additional features, such as anti-slip grooves or darker thread edges, can be incorporated to comply with CRPD guidelines.



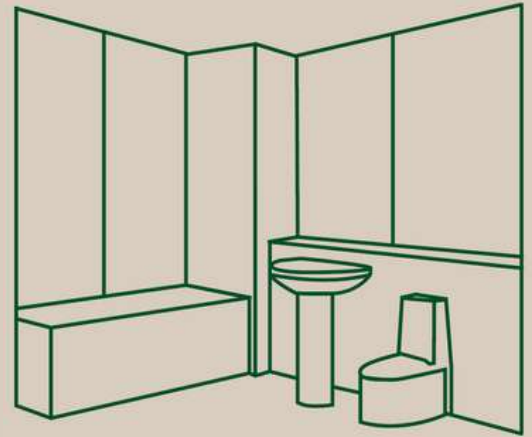
GO - Žejtun





Bathrooms

Bathrooms are spaces designed for relaxation and comfort. Architectural terrazzo can be incorporated into bathroom designs in various ways. Clients can choose from a wide range of mixes and collections, depending on the desired aesthetic and setting.



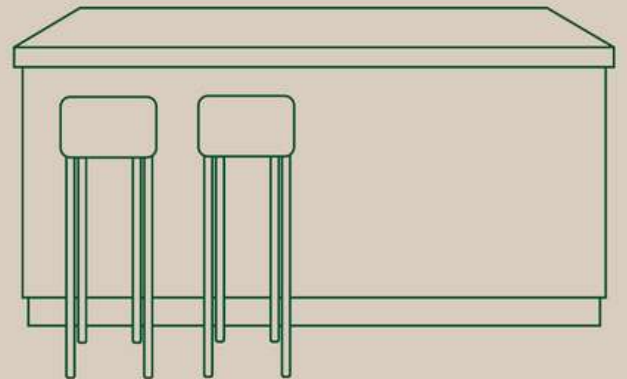
Designer Suite Bathroom - Rosselli AX Privilege

The Pebbles architectural terrazzo from the Minima Collection was designed specifically for this project. Walls were clad in 20mm thick honed panels and grouted in using an off-the shelf grouting that matched the binder colour perfectly. The customisable terrazzo mix was included in our standard product line after receiving positive feedback and interest from other architects, designers and clients.



Counter

Reception desks and countertops don't have to be dull. They are key elements normally located at the entrance of a building that defines the quality and atmosphere of a space. We can curtail any possible design requirement to suit our client's brief.



eCabs Offices

Halmann Vella Ltd was the lead contractor in charge of the refurbishment of eCabs offices in St Julian's. Works entailed removal of existing finishes, structural alterations and application of new finishes within a constricted three-week timeframe. Halmann International Ltd supported Halmann Vella Ltd with the fabrication and supply of architectural terrazzo 'Smoke Dark Grey' mix from the Minima Collection. The reception desk was machined out of a solid block of terrazzo with a mitred edge detail at the top, rounded solid section on the side and engraving of the logo at the front.



Terrazzo Specifications

Technical Data	Standard	Result
Flexural Strength	EN 13748-1:2004	≥ 8 MPa
Water Absorption	EN 13748-1:2004	<4%
Resistance to Compression	EN 1926:2006	≥ 60 MPa
Breaking Load	EN 13748-1:2004	≥ 3 kN
Slip Resistance	EN 13036-4:2011	Standard R9
Fire Resistance	EN 13748-1:2004	A1 FL Fire Resistant
Recyclable	100% of this product can be recycled	

recobel[®]


a Halmann Vella brand

Company Registered Address

Halmann International Ltd.
The Factory
Mosta Road
Lija, LJA9016
Malta

Manufacturing & Dispatch Address

Recobel
H59
Halfar Industrial Estate
Birzebbuga, BBG3000
Malta

 +356 2143 3636

 hello@recobel.eu

 recobel.eu